



2021 Return to Workplaces survey

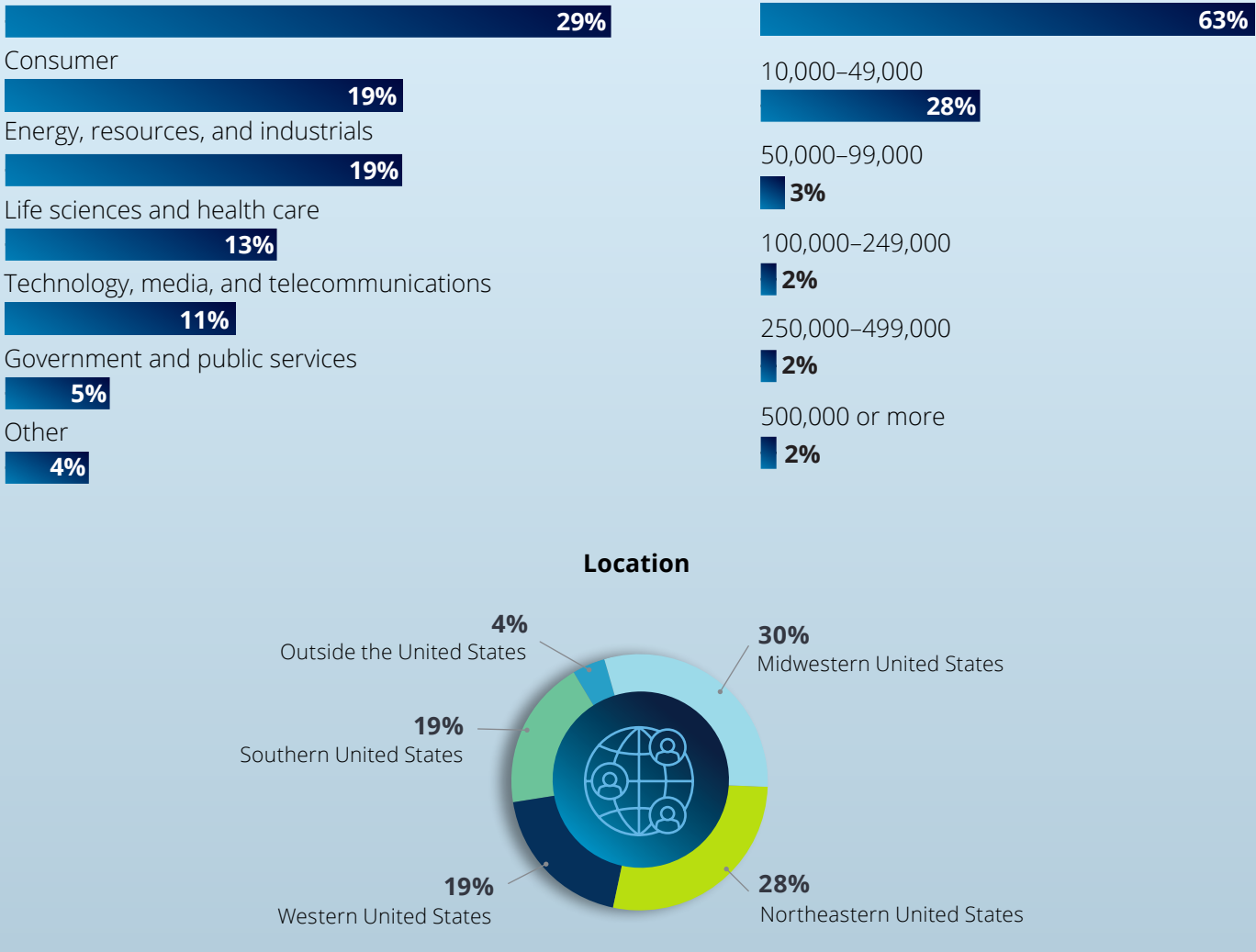
Executives weigh in on their return-to-workplace plans

In April 2021, we launched a survey asking our clients how they were approaching their return to the workplace.

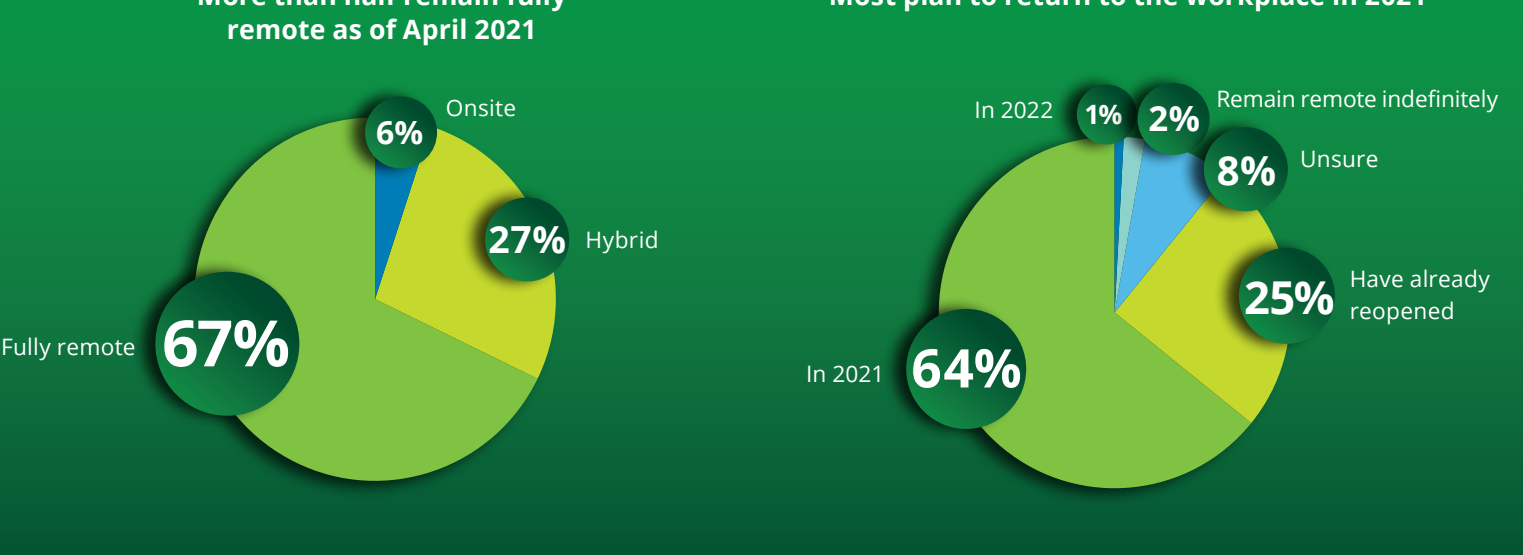
Here's what they had to say about timing, health and safety measures, business travel policies, future work models, and more.

Respondent demographics

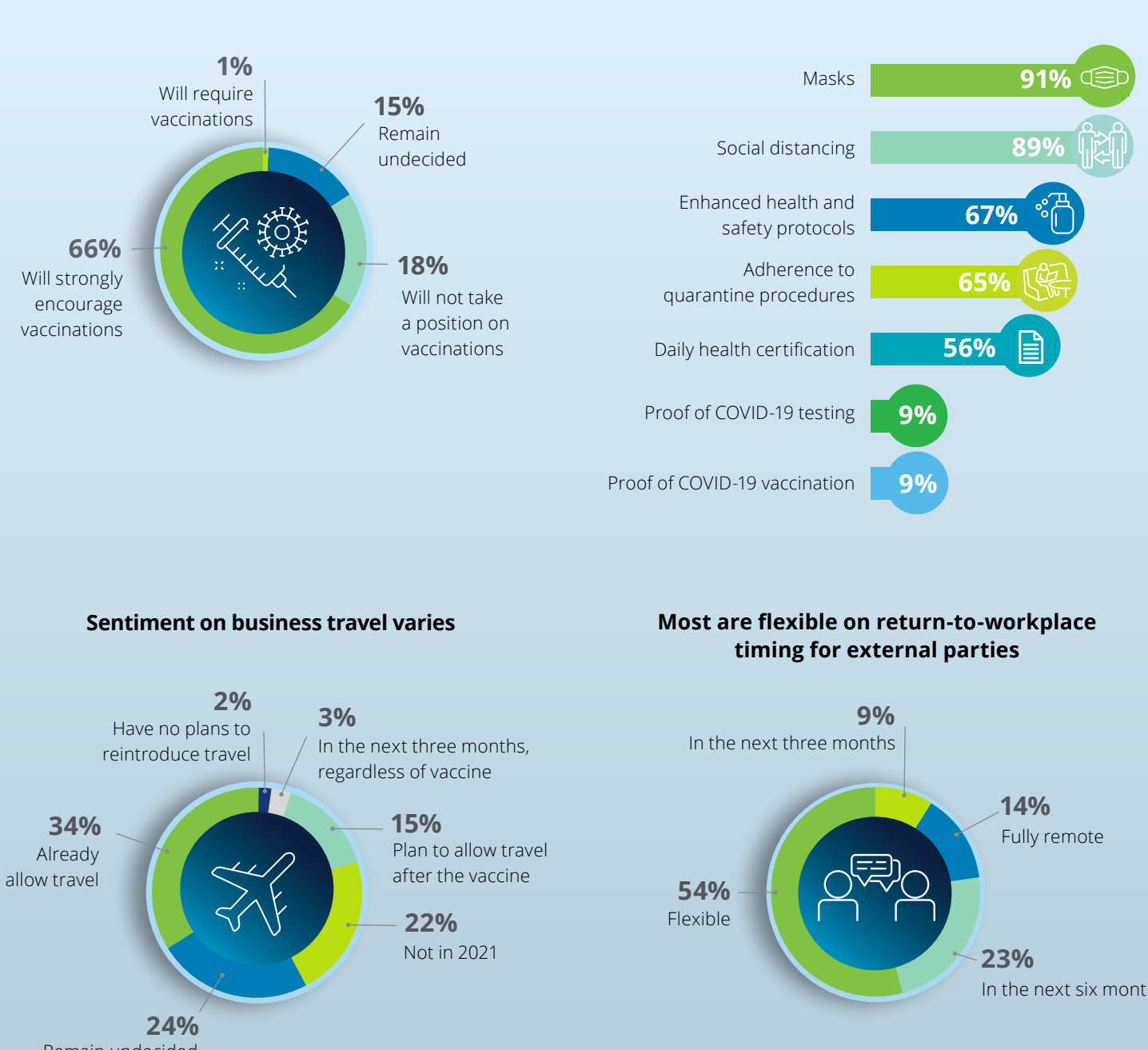
The survey was distributed via email and completed by 275 executives in early April 2021.



Physical workplace usage and expectations

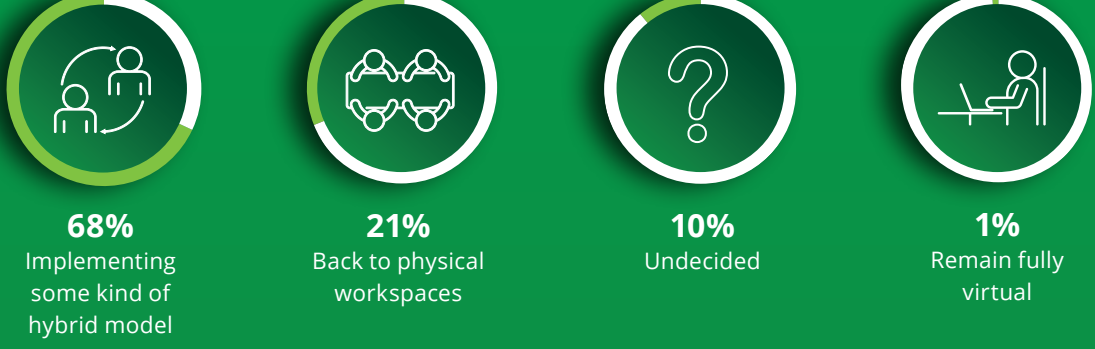


Returning to the workplace in the near term

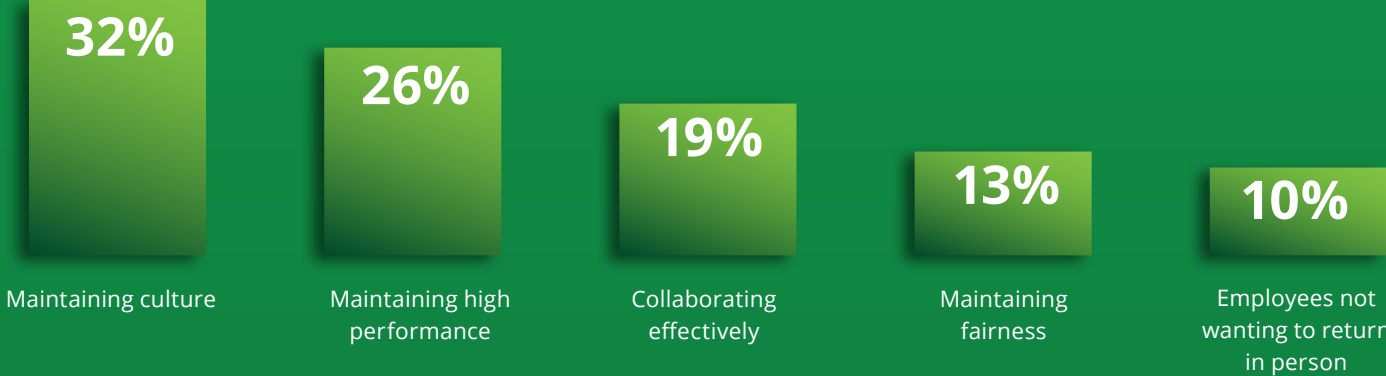


Returning to the workplace in the “new normal” (when freedom of movement is allowed)

Hybrid models appear to be here to stay in the “new normal”

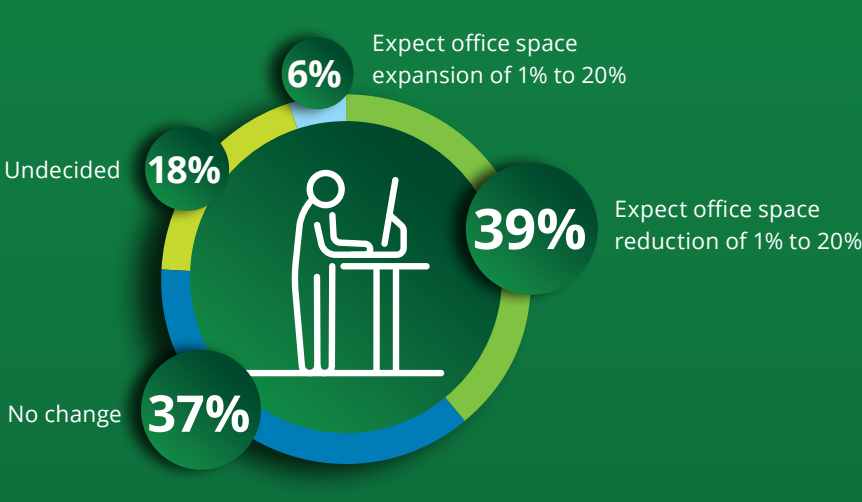


Employers’ biggest concerns with their future onsite/remote/hybrid workplace include:



Expected changes to office space in 2022 vary

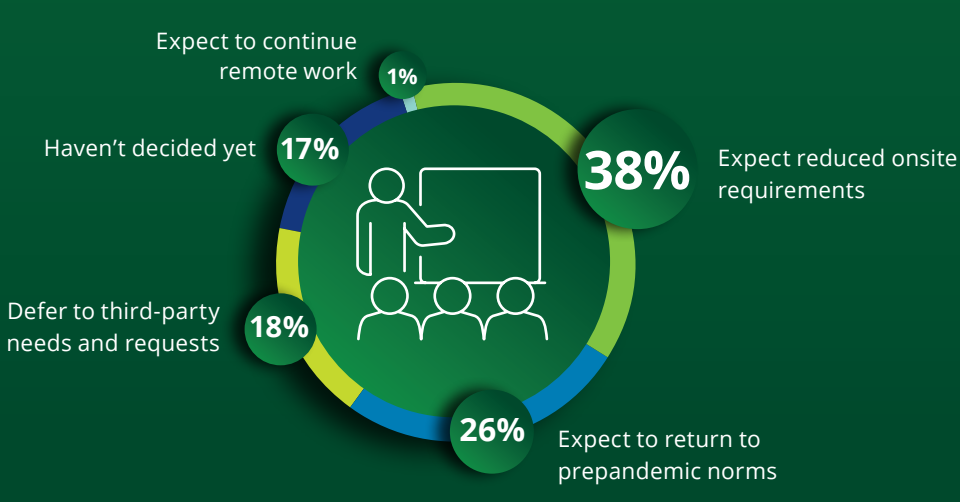
Organizations planning for a hybrid strategy are 4.5 times more likely to expect a reduction in space by more than 10%



Most organizations plan to reduce travel expenses (as a percentage of prepandemic levels)



Many organizations expect some reduction in onsite requirements for external parties



This publication contains general information only and Deloitte is not, by means of this publication, rendering accounting, business, financial, investment, legal, tax, or other professional advice or services. This publication is not a substitute for such professional advice or services, nor should it be used as a basis for any decision or action that may affect your business. Before making any decision or taking any action that may affect your business, you should consult a qualified professional advisor.

Deloitte shall not be responsible for any loss sustained by any person who relies on this publication.

About Deloitte
Deloitte refers to one or more of Deloitte Touche Tohmatsu Limited, a UK private company limited by guarantee (DTTL), its network of member firms, and their related entities. DTTL and each of its member firms are legally separate and independent entities. DTTL (also referred to as “Deloitte Global”) does not provide services to clients. In the United States, Deloitte refers to one or more of the US member firms of DTTL, their related entities that operate using the “Deloitte” name in the United States and their respective affiliates. Certain services may not be available to attest clients under the rules and regulations of public accounting. Please see www.deloitte.com/about to learn more about our global network of member firms.

Copyright © 2021 Deloitte Development LLC. All rights reserved.